

MFJ

HF/VHF SWR Analyzer

Model MFJ-249D

INSTRUCTION MANUAL

CAUTION: Read All Instructions Before Operating Equipment

MFJ ENTERPRISES, INC.

300 Industrial Park Road
Starkville, MS 39759 USA
Tel: 662-323-5869 Fax: 662-323-6551

TABLE OF CONTENTS

- 1.0 INTRODUCTION 1
 - 1.1 A Quick Word about Accuracy 1
 - 1.2 Typical Uses 2
 - 1.3 Frequency Range 2
- 2.0 POWER SOURCES 2
 - 2.1 External Power Supply 2
 - 2.2 Using Internal Batteries 3
 - 2.3 Using Rechargeable “AA” Type Batteries 3
 - 2.4 Using Conventional “AA” Drycell Batteries..... 3
 - 2.5 “Power Saving” Mode (sleep mode) 4
- 3.0 MAIN MENU AND DISPLAY 4
 - 3.1 General Connection Guidelines..... 4
 - 3.2 Power-up Display 4
 - 3.3 Main MODE descriptions..... 5
 - 3.4 Blinking “VOLTAGE LOW” display warning 6
- 4.0 MAIN (OR OPENING) MODE 6
 - 4.1 General Connection Guidelines..... 6
- 5.0 ADJUSTING SIMPLE ANTENNAS 7
 - 5.1 Dipoles..... 7
 - 5.2 Verticals..... 7
 - 5.3 Tuning a simple antenna..... 7
- 6.0 TESTING AND TUNING STUBS AND TRANSMISSION LINES 8
 - 6.1 Testing Stubs 8
 - 6.2 Velocity Factor of Transmission Lines 8
 - 6.3 Impedance of Transmission Lines or Beverage antennas..... 8
 - 6.4 Adjusting Tuners 9
 - 6.5 Adjusting Amplifier Matching Networks..... 9
 - 6.6 Testing RF Transformers..... 10
 - 6.7 Testing Baluns 10
 - 6.8 Measuring Inductance and Capacitance 10
 - Measure Capacitance 11
 - Measure Inductance 11
 - 6.9 Resonant Frequency of Tuned Circuits 11
 - Testing RF Chokes..... 12
- 7.0 TECHNICAL ASSISTANCE 12

1.0 INTRODUCTION

Attention: Read Section-2.0 before attempting to use your analyzer. Incorrect power supply voltages or excessive external voltage applied to the Antenna connector will damage it!

Description

The MFJ-249D is a compact battery powered RF impedance analyzer that combines four basic circuits; a 50-ohm bridge, eight-bit micro-controller, frequency counter, and a 0.53-230 MHz variable-frequency oscillator with switched coverage of nine overlapping bands. These four sub-elements are integrated to provide a wide variety of useful antenna and impedance measurements including coaxial cable loss and distance to an open or short. Although designed primarily for analyzing 50-ohm antennas and transmission line systems, the MFJ-249D also measures RF impedance from a few ohms to several hundred ohms. In addition, it functions as a discrete signal source (RF-Signal Generator) and independent frequency counter.

1.1 A Quick Word about Accuracy

Inexpensive impedance meters have limitations. The main causes of measurement error are:

- (1.) Signal ingress from external RF sources
- (2.) Component limitations
- (3.) Stray reactance from connectors, pc traces, and wires.

1.) Signal Ingress: Virtually all low-cost handhelds use simple broadband diode detectors. Unlike costly lab-grade analyzers using frequency-selective receivers, broadband detectors admit out-of-band signals. Unfortunately, the offending interference can't be filtered out using common low-pass or band-pass circuitry because the L/C elements would act like lengths of transmission line and transform the impedance readings as a function of frequency. Increasing generator power output can, in some instances, overpower interfering signals, but the current needed to deliver the additional RF power greatly reduces battery life. In fact, over 70% of the analyzer's 150-mA current drain is already allocated to the VFO and its amplifier stages for generating a low-harmonic level-amplitude test signal.

Most RF-interference problems occur at lower frequencies and are caused by high-power AM-broadcast stations. These signals couple efficiently into large antenna arrays and are especially problematic for 160-meter verticals. In the event you encounter intense local interference, we recommend using the *MFJ-731 Tunable Analyzer Filter*. It is designed to attenuate off-frequency signals between 1.8 and 30 MHz without introducing significant errors.

2.) Component Limitations: At very low voltage levels, diode detectors become nonlinear, a condition that reduces accuracy. The MFJ-249D minimizes this problem by using special microwave zero-bias Schottky detectors with linearity enhanced by compensating diodes. Using this technique, each analyzer is individually optimized to provide the highest accuracy possible with both high and low impedance loads, making the A/D converter's 8-bit resolution the analyzer's primary accuracy limitation.

3.) Stray Reactance: The length of electrical connections between components within the bridge circuit, and the line between the bridge and antenna connector, may introduce inaccuracy at higher frequencies and when the load impedance is very high or very low. However, the MFJ-249D minimizes this problem with careful pc layout and by using low-capacitance microwave-grade surface-mount components with virtually no lead length.

While some analyzers may display misleading "exact readings" falling outside the reliable measurable range, the MFJ-249D does not. Instead, it is programmed to generate a *display warning* for out-of-range results. For example, if ($Z > 650$) appears on your display, it means the impedance being measured is greater than 650 ohms and outside the reliable measurement range.

1.2 Typical Uses

The MFJ-249D may be used to adjust, test, or measure the following:

- Antennas:**.....SWR, impedance, resistance, resonant frequency, and bandwidth
- Antenna tuners:**.....SWR, bandwidth, frequency
- Amplifiers:**Input and output matching networks
- Coaxial transmission lines:**.....SWR, velocity factor, loss, resonant frequency
- Matching or tuning stubs:**SWR, resonant frequency, bandwidth
- Traps:**.....Resonant frequency and approximate Q
- Tuned Circuits:**.....Resonant frequency
- Small capacitors:** Value
- RF chokes and inductors:**Self resonant frequency, series resonance, and value
- Transmitters and oscillators:**.....Frequency

The MFJ-249D as a non-precision signal source:

VFO output is leveled at approximately 3-Vpp, or around 20 milliwatts into a 50-ohm load. This signal is relatively pure with harmonics better than -25 dBc (dB below the fundamental-frequency carrier). The internal source impedance (Zo) is 50 ohms.

A more complete description of the MFJ-249D's features along with proper measurement methods can be found by reading sections covering the particular measurement you wish to make. Consult the table of contents for various applications.

1.3 Frequency Range

The MFJ-249D covers 0.10 to 0.16 and 0.28 to 230 MHz using a precision reduction-drive VFO tuning capacitor and two band switches. Bands of coverage are:

- Main Switch: 155-230 MHz 113-155 MHz 67-113 MHz 28-67 MHz 11-28 MHz Lower Range
- Lower Range Switch: 4.7-11 MHz 2.1-4.7 MHz 1.0-2.1 MHz 0.52-1.0 MHz 0.28-0.52 0.10-0.16

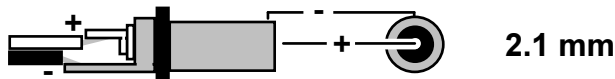
2.0 POWER SOURCES

Please read this entire section before connecting your analyzer to any power source. Improper connections or incorrect voltages may cause permanent damage to your analyzer!

2.1 External Power Supply

MFJ offers an optional power supply, the MFJ-1312D, that satisfies all external supply requirements. We strongly recommend using this supply. If you use a different power source, note that the voltage output must be greater than 11 volts and less than 16 volts when the analyzer is powered on and running (loaded power source). The maximum voltage in Sleep Mode (unloaded power source) should never exceed 18 volts. AC adapters must be well filtered and the plug must have a grounded sleeve and positive center lead. The ideal voltage-source specification is 13.8 VDC at 150 mA. Confirm your supply can deliver this output level safely without overheating or introducing excessive AC ripple.

Please read the battery installation instructions (Section 2.3) if you plan to install batteries. Never connect external DC power if non-rechargeable batteries are installed and the battery charger is enabled. Permanent damage could result!



The MFJ-249D has a recessed 2.1 mm power jack located on the top-right-hand side of the unit. It is labeled *Power 13.8 VDC*. The jack's outside barrel contact is negative and the center pin is positive. *Inserting a power plug into the power jack automatically disables the internal batteries as a power source.* However, the batteries will be trickle charged if the charger circuit is enabled.

IMPORTANT WARNING: Reverse Polarity Or Excessive Voltage Can Damage Or Destroy The MFJ-249D. Never Apply More Than 18 Volts, Never Use AC-output or Positive Ground Supplies!

2.2 Using Internal Batteries

Before installing batteries for the first time, *check the position of the Charger Jumper*. To gain access, remove the eight screws securing the analyzer's back cover and separate it from the unit. Look for a 3-pin header with a small black-plastic shorting plug that fits over two of its pins. It is located at the top of the main pc board near the *OFF-ON* switch and power connector. *The shorting plug must be properly positioned for the type of battery you intend to use (either rechargeable or non-rechargeable).* While you have the analyzer's case removed, you may install batteries into their tray -- or install them later by removing the battery-tray door that is attached to the rear of the case with two screws.

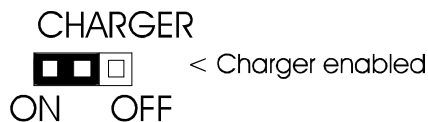
2.3 Using Rechargeable "AA" Type Batteries

IMPORTANT WARNING: Do not use an external power sources that deliver less than 13.8 volts with rechargeable batteries installed. If the external supply voltage is too low, the charger will not work properly and batteries will eventually discharge. We recommend charging batteries with the MFJ-249D power switch off and allowing enough charging time to establish full battery charge. A minimum of ten hours is recommended.

When using rechargeable batteries, your power source must deliver a minimum of 13.8 volts to meet the minimum charge-voltage threshold. Typical charging current is 10-20 mA (trickle-charge rate). The charger circuit functions any time external power is connected, even when the analyzer is turned off. Again, the MFJ-1312D supply fulfills all power supply and charging requirements for the MFJ-249D and is recommended.

When using rechargeable batteries, the internal black plastic jumper must be set to the proper position. If it is not set properly, the batteries will not charge. As described above, the jumper is located inside the analyzer, near the external power jack on the back side of the circuit board.

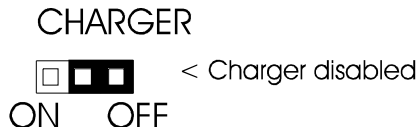
For rechargeable batteries, set the jumper as shown below:



2.4 Using Conventional "AA" Drycell Batteries

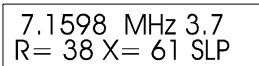
Whenever possible, install a fresh matched set of high-quality alkaline batteries. Conventional zinc cells will work, but alkaline batteries offer a lower risk of damage caused by leakage. Alkaline cells also provide longer running time and superior shelf life. *When using any non-rechargeable dry-cell battery, always remove them immediately when they become weak to avoid damage from leakage. Also, never store your analyzer for extended periods (longer than a month) with non-rechargeable batteries installed.*

IMPORTANT WARNING: When Using Non-Rechargeable Batteries, The Analyzer's Internal Charging System Must Be Defeated! To Defeat The Charger, Set The Internal Jumper To The Charger-Off Position, As Shown Below:



2.5 “Power Saving” Mode (sleep mode)

The analyzer's current drain is normally around 150 mA, which places a moderate demand on the battery pack. You can extend the analyzer's running time significantly by using the internal *Sleep Mode* power-saving function. In *Sleep Mode*, the analyzer's RF-generator shuts down and battery drain drops to under 15 mA. Any time *Sleep Mode* is activated, the analyzer operates with a *two-minute inactivity window*. *During any 2-minute period, you must actuate the Mode switch -- or adjust the frequency by more than 50 kHz -- at least once for the analyzer to remain awake.* Any time a two-minute inactivity period elapses, the power saving circuit automatically switches in. When the analyzer goes to sleep, a blinking *SLP* message will appear in the display's lower right corner, as shown below:



To reawake the unit, momentarily press either the *Mode* or *Gate* button.

To Disable *Sleep mode*:

- (1.) Turn the analyzer off.
- (2.) Press and hold the *Mode* button while reapplying power.
- (3.) Continue holding the *Mode* button until the copyright message appears on the screen.
- (4.) Release *Mode*. If *Sleep Mode* was disabled successfully, the message shown below will appear on-screen. *The Sleep Mode function becomes re-enabled anytime the analyzer is turned Off and On again.*



3.0 MAIN MENU AND DISPLAY

IMPORTANT WARNING: *Never Apply RF or any other external voltage to the Antenna port of this unit. The MFJ-249D uses zero bias detector diodes that may be damaged by external voltages. Read Section-2.0 before applying power! Incorrect supply voltages will also damage this unit.*

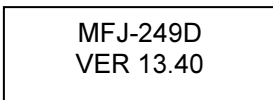
3.1 General Connection Guidelines

- 1.) **Antenna Jack:** When making RF measurements, connect your *Device Under Test* (DUT) to the SO-239 connector located on the top of the case. You'll use this port for *SWR* and all other RF measurements excluding the *Frequency Counter* function.
- 2.) **Power connector:** (2.1 mm type) is described in Section 2.0. Be sure to read Section-2.0 *before* operating your unit. Using an incorrect power sources can permanently damage the analyzer.
- 3.) **Frequency Counter Input:** BNC connector used for frequency-counter functions only.

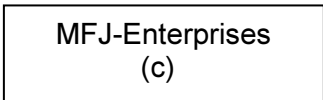
3.2 Power-up Display

After turning on the *Power* switch (or after applying external power with the switch on), a sequence of three message screens appear on the display.

The first screen presents the analyzer's software version (*VER*).



The second message shows the software copyright symbol.



The third message provides a power-source check, displaying the internal battery or external power supply voltage level along with a warning if the source is too low to support reliable operation.



The fourth and final power-up display is the *working screen* for the analyzer’s default operating mode, as described in Section 3.2 (*SWR, Impedance R&X*).

The MFJ-249D has three (3) Basic Operating Modes that are used for conducting a variety of measurements. If you tap (momentarily press) the *Mode* button, the analyzer steps to the next *Mode* selection. The three main modes and their opening screens are described in Section-3.3 below:

3.3 Main MODE descriptions

Press the *Mode* switch to scroll through the analyzer's three operating modes. By "scrolling", we mean that each tap of the mode switch will step the analyzer ahead to the next menu selection. Each new selection comes up on the display with an *Identifier Screen*. After 3 seconds, the *Identifier Screen* is replaced by the mode's working screen. The menu is circular, so after sequencing through all five choices, the sequence starts over. The three basic operating modes are described in detail below:

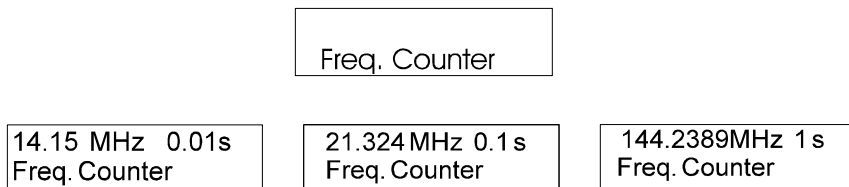
1.) SWR Bargraph: The *SWR Bargraph* mode is the analyzers "default" mode because it is the one most frequently used for routine antenna adjustments. The MFJ-249D will measure the standing wave ratio (SWR) of any load referenced to 50 ohms. To measure the SWR of a 50-ohm coaxial line simply connects the line to the **ANTENNA** connector. The display will show the selected frequency and the actual SWR in a numerical and a bar graph format. The maximum numerical SWR displayed is 25. Any SWR adjustments have to be made at the antenna, since any adjustments at the transmitter end of the feedline cannot affect the losses, nor the efficiency of the antenna system.

2.) Impedance Magnitude: This mode will provide **magnitude of the impedance** readings for the load connected to the **ANTENNA** jack. The readings are the combination of the resistive and reactive parts of the load. The **magnitude of the impedance (Z)** is the square root of the addition of square of the **resistance (R)** and the **reactance (X)**. By considering the definition of **Z** and by adjusting the **TUNE** knob until the lowest SWR reading is obtained, it is possible to read the antenna’s pure reactance. The point of the lowest SWR is generally the point of lowest reactance. For the SWR to be 1:1, the load must be an impedance of 50 ohms of pure resistance (R=50), with no reactance (X=0).The top line of the working display shows the *VFO Frequency* in MHz and the numerical *SWR* reading. The lower line displays the *Resistive (R)* impedance components for the attached load. Pressing the **MODE** push button, from the **SWR** mode selection, the Magnitude of the Impedance (**Z**) mode is enabled. It will display **Z** in a range from 0 to 650 ohms. If the impedance is greater than about 650 ohms the message “(Z>650)” is displayed. The **SWR** value for the connected load will be displayed in the LCD. The stray output capacitance (around 3pF) will be lower than 650 ohms at frequencies higher than 60 MHz. This stray capacitance does not affect high frequency measurements considering the connection of a transmission line.



3.) Frequency Counter: The third mode converts the analyzer into a discrete frequency counter. Connect the RF source (DUT) to the BNC connector labeled *Frequency Counter Input*. As with many counters, the sensitivity

threshold for a locked-in reading gradually decreases with increasing frequency. The measurement threshold at 0.53 MHz is around 10 millivolts -- and this level gradually increases to around 200 millivolts at 230 MHz. **The "never exceed" limit for safe testing is 2-volts peak-to-peak.** The counter's default gate time is 0.1 second, but you may reset it to either .01 second (very fast) or 1.0 second (very slow) by tapping the *Gate* button. A 1.0-second gate times provide increased frequency resolution (more digits to the right of the decimal point), and the .01 gate provides very fast response with less resolution (see sample screens below):



IMPORTANT WARNING: Never apply more than two volts of peak voltage -- or any dc voltage -- to the Frequency Counter BNC port.

3.4 Blinking "VOLTAGE LOW" display warning

If the external dc source or battery voltage drops below 11 volts, a blinking *Voltage Low* warning will come up on the display. Pressing *Mode* during a low-voltage warning will disable it and allow you to continue testing.

Caution: Measurements made with supply voltages below 11 volts may not be as reliable.



4.0 MAIN (OR OPENING) MODE

IMPORTANT WARNING: Never apply RF or any other external voltages to the Antenna port of this unit. This unit uses zero bias detector diodes that are easily damaged by external voltages over a few volts. Also, confirm the power supply is correct, as described in Section-2.0, before operating this unit.

A basic understanding of antenna theory and transmission line behavior will be helpful for making the best use of the data provided by your MFJ-249D. The ARRL Handbook and ARRL Antenna Book provide concise peer-reviewed explanations that should suffice for most applications. When it comes to the finer points of antenna design, there is (unfortunately) a fair amount of mis-information circulating on the web and over the airwaves. When it comes to antenna systems, there's no black magic. Stick with the scientific fundamentals as presented by credible professional sources, and everything your analyzer tells you should make sense!

4.1 General Connection Guidelines

When conducting *SWR* and *Impedance* measurements, follow these practical guidelines:

- 1.) If connector transitions (RF adapters) are needed, use only high-quality parts and check them over for wear, oxidation, dirt, and tight pin contact before proceeding.
- 2.) Make all connection electrically secure and keep all leads as short as possible. This precaution is especially important when measuring electrical components that are not part of a 50-ohm coaxial system.
- 3.) Always use good quality 50-ohm cable and connectors when making SWR measurements. Contaminated, mismatched, or damaged cable will introduce significant error.

5.0 ADJUSTING SIMPLE ANTENNAS

Most antennas are tuned for operating frequency by varying the element length -- and most homemade verticals and dipoles are very simple to adjust.

5.1 Dipoles

Because the dipole is a balanced antenna, it's always a good idea (and good engineering practice) to install a balun at the feed point. A balun could be as simple as several turns of coax wrapped several inches in diameter or it could be a complicated affair with many windings on a ferromagnetic core. A 1:1 Guanella "current" balun wound on a toroid core made from material with the appropriate permeability is usually the most effective choice.

The height of a dipole above ground, as well as any surrounding objects, will influence the feed point impedance and SWR. Typical residential heights usually result in minimum SWR readings below 1.5:1 when using 50-ohm coaxial cable. In general, the only adjustment available for tuning a simple wire dipole is its length. If too long, it resonates too low in the band. If too short, it resonates high. You may be able to improve the match (SWR) by raising or lowering the element in relationship to ground. However, doing so may impact other parameters such as the best take-off angle for distant or local contacts (TOA).

Anytime the antenna impedance and feedline impedance do not precisely match each other (as is usually the case), the feedline will act like a transformer and modify the *Impedance* of the load placed at the opposite end. However, if you use good-quality 50-ohm cable, the *SWR* should remain constant except for a small reduction caused by resistive loss as the line is made longer. If changing the coax length by a relatively small amount changes *SWR* at your test frequency, the feedline either has common-mode current flowing on the outer surface of the shield that is detuning the antenna, or the feedline itself is not really 50-ohm cable. Common-mode current caused by conduction typically occurs when no balun has been installed at the feed point to choke it off. Common-mode induction currents may also result from other installation errors such as running the feedline parallel rather than perpendicular to the radiating element. Repositioning the feedline may reduce unwanted inductive coupling.

5.2 Verticals

Verticals in the "monopole" class require a ground plane. To simplify installation and cut costs, manufacturers sometimes (incorrectly) downplay the importance of an effective radial system. When installed over a good ground, the impedance of a quarter-wave radiator may be quite low, with SWR running nearly 2:1. Ironically, over a poor ground, minimum SWR for the same antenna could improve to 1:1. However, if the ground system is poor, antenna performance will be compromised despite favorable SWR readings. Far better to install the best ground system possible and configure a matching network at the base of the vertical element to match into a 50-ohm feed system. Verticals tune the same as dipoles -- add length to lower the operating frequency and shorten to raise it.

Another class of verticals are considered "ground-independent" because they come with a counterpoise or rigid radial system built into the design. These antennas are usually configured as multiband OCFDs (off-center fed dipoles) with the longer leg being the dominant vertical radiator. Ground independent verticals tend to work more efficiently when elevated well above ground rather than when installed in close proximity to it because of reduced ground losses. Many use multiple resonators or traps and have a matching network at the feed point. Most ground-independent vertical elements are asymmetrical and require a highly effective baluns to prevent the feedline from becoming part of the antenna system.

5.3 Tuning a simple antenna

To tune a basic dipole fed with 50-ohm coax, follow the steps outlined below:

- 1.) Momentarily short the center conductor and shield to bleed off static, then connect to the *Antenna* jack.
- 2.) Set the analyzer's band switches and *VFO* tuning for the desired band.
- 3.) Select any analyzer operating mode that will display *SWR*.
- 4.) Read the *SWR* and adjust the *VFO* tuning for minimum *SWR*. Write down the frequency.

- 5.) To re-tune your antenna accurately without a lot of cut-and-try, calculate a *Scaling Factor*.
- 5.) First, determine if the antenna needs to be shorter (higher in frequency) or longer (lower in frequency).
- 6.) To make it *shorter (higher)*, divide the *present frequency* by the *desired frequency* (scaling factor <1).
- 8.) To make it *longer (lower)*, divide the *desired frequency* by the *present frequency* (scaling factor >1).
- 9.) Multiply the *scaling factor* by the *present length* to calculate the new length.

For example, suppose your 132-foot dipole has low SWR on 3.750 MHz and you want to move it to 3.900 MHz. It needs to be shorter to tune higher, so you calculate the scaling factor: $3.750/3.900 = 0.95$. Next calculate the new length: $132 \text{ feet} \times .96 = 125.7 \text{ feet}$. Note that scaling only applies to full-size verticals and dipoles that don't use loading coils, traps, stubs, resistors, capacitors, or capacitance hats. Antennas with these features should be adjusted according to the manufacturer's instructions.

6.0 TESTING AND TUNING STUBS AND TRANSMISSION LINES

6.1 Testing Stubs

The proper length of quarter and half wave stubs or transmission lines can be found with this unit and a 50Ω carbon resistor. Accurate measurements can be made with any type of coaxial or two wire line. The line does *not* have to be 50 ohms. The stub to be tested should be attached with a 50Ω noninductive resistor in series to the center conductor of the "ANTENNA" connector with a coaxial line. The shield should be grounded to the connector shell. For two wire lines the 50Ω resistor connects in series between the ground shell of the PL-259 and one conductor. The other conductor of the balanced line connects directly to the center pin of the connector. Coaxial lines can lay in a pile or coil on the floor, two wire lines *must* be suspended in a straight line a few feet away from metallic objects or ground. The lines must be *open circuited* at the far end *for odd multiples* of 1/4 wave stubs (i.e. 1/4, 3/4, 1-1/4, etc.) and *short circuited for half wave stub multiples* (like 1, 1-1/2, etc.). Connect the PL-259 to the "ANTENNA" connector of the MFJ-249D and adjust the line or stub by the following method. For critical stubs you may want to **gradually** trim the stub to frequency.

1. Determine the desired frequency and theoretical length of the line or stub.
2. Cut the stub slightly longer than necessary.
3. Measure the frequency of the lowest SWR. It should be just below the desired frequency.
4. Divide the measured frequency by the desired frequency.
5. Multiply the result by the length of the stub. This is the necessary stub length.
6. Cut the stub to the calculated length and confirm that it has the lowest SWR near the desired frequency.

6.2 Velocity Factor of Transmission Lines

Velocity Factor of Transmission Lines

The MFJ-249D can accurately determine the velocity factor of any impedance transmission line. Measure the velocity factor with the following procedure:

1. Disconnect both ends of the transmission line and measure the physical length of the line in feet.
2. Set up the line to measure 1/4 stubs as in the section on Testing and Tuning Stubs.
3. Find the *lowest* frequency across all the bands at which the lowest SWR occurs. The dip should occur slightly below the 1/4 wavelength frequency.
4. Read the frequency from the frequency counter display. This is the 1/4 resonant wavelength frequency of your transmission line. Note that you will get low SWR reading at all odd multiples of 1/4 wavelength.
5. Divide 246 by the measured frequency. This gives you the free space 1/4 wavelength in feet.

6.3 Impedance of Transmission Lines or Beverage antennas

The impedance of transmission lines between 15 and 150 ohms can be measured with the MFJ-249D, a 250 ohm potentiometer, and an ohm meter. Lines of higher impedance can be measured with a higher resistance potentiometer if a broad band transformer is used (see the section on testing transformers) to transform the line impedance to approximately 50 ohms.

1. Measure the 1/4 wavelength frequency of the transmission line to be tested as in Testing and Tuning Stubs section.
2. Terminate the far end of the transmission line with a non-inductive 250 ohm potentiometer.
3. Connect the transmission line to the MFJ-249D "ANTENNA" connector and set the analyzer to the 1/4 wave frequency.
4. Observe the SWR as you vary the "TUNE" from end to end of the "FREQUENCY" range selected.
5. Adjust the potentiometer until the SWR reading varies as little as possible, over the "TUNE" range. Note that the *value* of the SWR is not important. Only the *change* in SWR as the frequency is varied is important.
6. The value of the potentiometer will correspond closely to the line impedance.

Line Impedance Using a Potentiometer or Resistor Decade Box:

Limit these measurements to the HF region because stray reactance from a potentiometer or decade box could become a significant source of error at VHF frequencies. Also, use only non-inductive resistances (no wire-wound resistors). If needed, you may install a broadband transformer of known performance accuracy to extend the measurement range.

- 1.) Connect the DUT to the *Antenna* connector.
- 2.) Terminate the far end with a potentiometer or resistance decade box.
- 3.) Adjust the analyzer's *VFO* frequency and note *only* the SWR change (SWR need not be low).
- 4.) Adjust termination resistance until SWR remains constant over the widest possible range.
- 5.) The resistance of the termination resistor is the line impedance (or surge impedance of the system).

6.4 Adjusting Tuners

The MFJ-249D can be used to adjust tuners. Connect the MFJ-249D "ANTENNA" connector to the tuner's 50 ohm input and the desired antenna to the normal tuner output. This connection can be made with a manual RF switch to facilitate rapid changeover.

WARNING: Always connect the common (rotary contact) of the switch to the tuner. The switch must connect either the MFJ-249D or the station equipment to the tuner. ***The Station Equipment Must Never Be Connected To The MFJ-249D.***

1. Connect the MFJ-249D to the tuner input.
2. Turn on the MFJ-249D and adjust it to the desired frequency.
3. Adjust the tuner until the SWR becomes unity (1:1).
4. Turn off the MFJ-249D and re-connect the transmitter.

6.5 Adjusting Amplifier Matching Networks

The MFJ-249D can be used to test and adjust RF amplifiers or other matching networks without applying operating voltages. The tubes and other components should be left in position and connected so that stray capacitance is unchanged. A non-inductive resistor that equals the approximate driving impedance of the tube is installed between the cathode of the tube and the chassis, or a resistor should be connected between the anode and the chassis that equals the calculated plate impedance of the tube. The appropriate network can now be adjusted. The antenna relay (if internal) can be engaged with a small power supply so that the coax input and output connectors are tied to the networks.

CAUTION: The driving impedance of most amplifiers changes as the drive level is varied.

Do not attempt to adjust the input network with the tube in an operating condition with the low level of RF from the MFJ-249D.

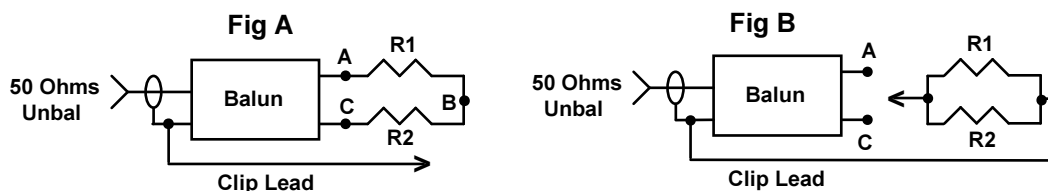
6.6 Testing RF Transformers

RF transformers that are designed with a 50 ohm winding can be easily and accurately tested with the MFJ-249D.

The 50 ohm winding is connected through a short 50 ohm cable to the "ANTENNA" connector on the MFJ-249D. The other winding(s) of the transformer is then terminated with a low inductance resistor that is equal to the windings impedance. The MFJ-249D can then be swept through the desired transformer frequency range. The SWR and bandwidth of the RF transformer can be measured.

6.7 Testing Baluns

To test balun performance, connect the analyzer *Antenna* jack to the balun's 50-ohm unbalanced input. Terminate the balanced side with two equal-value load resistors connected in series to make up the required load impedance. For example, to test a 200-ohm (4:1) secondary, use a pair of 100-ohm carbon (non-inductive) resistors in series, as shown below in Fig A:



A properly designed current balun works best for maintaining current balance. It also has the highest power capability and lowest loss for given materials. To evaluate the balun (DUT), measure *SWR* while connecting the grounded clip lead to point A, B, and C. When functioning properly, a current balun will exhibit low SWR over its entire operating range with the clip lead installed at any of those three positions.

A well designed voltage balun should show low SWR over its operating range with the clip lead installed at position B, but show poor SWR with the clip lead is installed at A or C (note, however, that the SWR readings should measure about the same whether connected to A or C). A voltage balun should also be tested using the configuration shown in Fig B, with the resistors in parallel. If it is operating properly, SWR will be remain low with the resistors connected from either output terminal to ground.

6.8 Measuring Inductance and Capacitance

To measure capacitance or inductance you will need some standard value capacitors and inductors. These should be collected and tested for accuracy. MFJ suggests the following sets of values:

Inductors: 330 μ H, 56 μ H, 5.6 μ H, .47 μ H

Capacitors: 10 pF, 150 pF, 1000 pF, 3300 pF

Readings will be the most accurate if the standard test values used are between 0.5 μ H to 500 μ H to measure capacitance or 10 pF and 5000 pF to measure inductance.

Take a component of unknown value and connect it in series with a standard component to make a series LC circuit. Attach the series LC circuit to the "ANTENNA" connector in series with a 50 Ω resistor.

Measure Capacitance

1. Connect an unknown capacitor in series with the highest value standard inductor.
2. Connect the LC circuit to ANTENNA connector with a 50 Ω resistor in series.
3. Adjust the tune knob through the bands until you get the lowest SWR. If you do not get a low SWR, change to the next inductor with a lower value and try again. Continue the process until you obtain low SWR.
4. Solve this equation using F as the resonant frequency and L as the inductance of the standard inductor,

$$C(\text{pF}) = \frac{1}{.00003948F^2L}$$

F = MHz L = μH

Measure Inductance

1. Connect an unknown inductor with the highest value standard capacitor in series.
2. Connect the series LC circuit to "ANTENNA" connector with a 50 Ω resistor in series.
3. Adjust the tune knob through the bands until you get the lowest SWR. If you do not get a low SWR, change to the next smaller value standard capacitor and try again. Repeat the process until you get low SWR.
4. Solve this equation using F as the resonant frequency and C as the capacitance of the standard capacitor.

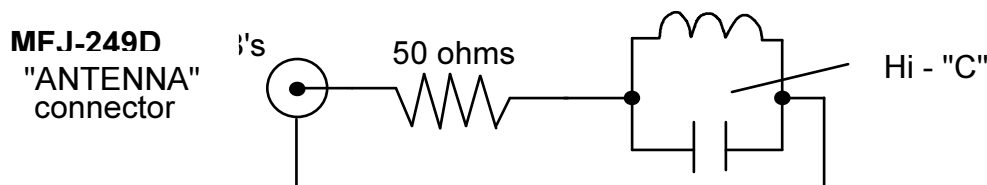
$$L(\mu\text{H}) = \frac{1}{.00003948F^2C}$$

F = MHz C = pF

6.9 Resonant Frequency of Tuned Circuits

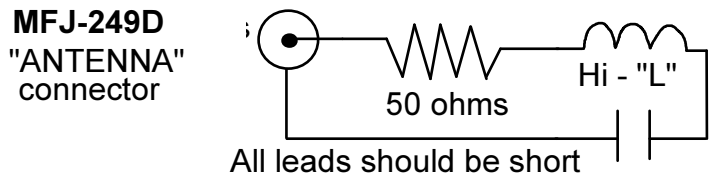
The MFJ-249D can be used to measure the resonant frequency of tuned circuits by two methods. The first method involves placing a 50 ohm resistor in series with the MFJ-249D "ANTENNA" connector. The MFJ-249D connects through the resistor to the parallel tuned circuit. This circuit is for high capacitance values.

Tune the MFJ-249D's frequency until the highest SWR is reached. This is the resonant frequency of the load.



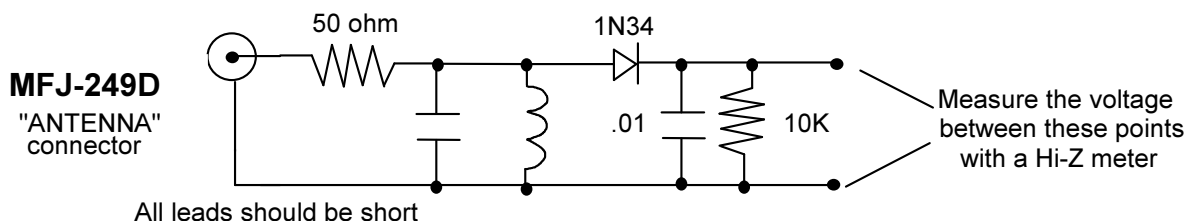
All leads should be short

For high inductance values a series LC circuit should be used to measure resonant frequency. The inductor and capacitor should be connected in series through a 50Ω low inductance carbon resistor across the "ANTENNA" connector on the MFJ-249D.



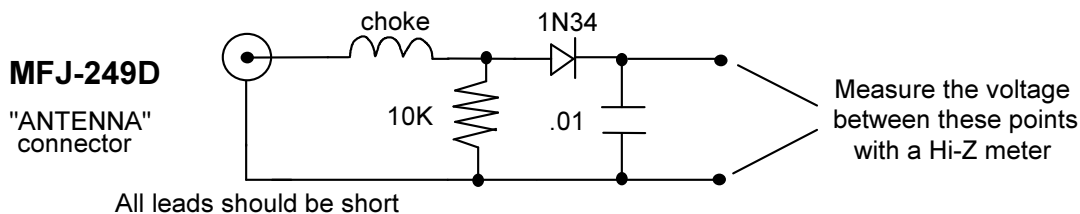
Tune the MFJ-249D's frequency until the lowest SWR is reached. This is the resonant frequency of the load.

An external diode detector and volt meter can also be used to measure the resonant frequency of circuits. The maximum meter reading occurs at the resonant frequency.



Testing RF Chokes

Large RF chokes usually have frequencies where the distributed capacitance and inductance form a low impedance series resonance. The troublesome series resonance can be detected by slowly sweeping the frequency of the MFJ-249D over the operating range of the choke. Peaks in the voltage measured by the RF voltmeter will identify the low impedance series-resonant frequencies.



Refer to the section on measuring the inductance of RF chokes.

7.0 TECHNICAL ASSISTANCE

If you have any problem with your MFJ-249D, first check the appropriate section of this manual. If the manual does not reference your problem and the problem isn't solved by reading the manual, you may call *MFJ Technical Service* at **662-323-0549** or the *MFJ Factory* at **622-323-5869**. We can serve you best if you have your unit, manual, and all pertinent information about your difficulty handy so you can answer questions the technicians may ask.

You can also send questions by mail to:

MFJ Enterprises, Inc.,
300 Industrial Park Road,
Starkville, MS 39759;

by FAX to 662-323-6551; or by e-mail to techinfo@mfjenterprises.com. Send a complete description of your problem, an explanation of exactly how you are using your unit, and a complete description of your station.

FULL 12-MONTH WARRANTY

MFJ Enterprises, Inc. warrants to the original owner of this product, if manufactured by MFJ Enterprises, Inc. and purchased from an authorized dealer or directly from MFJ Enterprises, Inc. to be free from defects in material and workmanship for a period of 12 months from date of purchase provided the following terms of this warranty are satisfied.

1. The purchaser must retain the dated proof-of-purchase (bill of sale, canceled check, credit card or money order receipt, etc.) describing the product to establish the validity of the warranty claim and submit the original or machine reproduction of such proof of purchase to MFJ Enterprises, Inc. at the time of warranty service. MFJ Enterprises, Inc. shall have the discretion to deny warranty without dated proof-of-purchase. Any evidence of alteration, erasure, of forgery shall be cause to void any and all warranty terms immediately.
2. MFJ Enterprises, Inc. agrees to repair or replace at MFJ's option without charge to the original owner any defective product provided the product is returned postage prepaid to MFJ Enterprises, Inc. with a personal check, cashiers check, or money order. This is good on all products except antennas and software to cover postage and handling for return from in warranty service. We also take MasterCard, Visa, American Express, and Discover credit cards. Postage and handling may vary according to the weight of the product in question. You should specify what type of delivery service you wish. We can send by UPS, U.S. Postal service or Fedex. MFJ doesn't guarantee delivery by US Postal Service.
3. MFJ Enterprises, Inc. will supply replacement parts free of charge for any MFJ product under warranty upon request, provided the following terms are satisfied. MFJ must receive the original parts you wish to replace, your proof-of-purchase, and a personal check, cashiers check or money order must be provided to cover postage and handling. Postage and handling may vary according to the weight of the product in question. We also take MasterCard, Visa, American Express and Discover credit cards.
4. This warranty is **NOT** void for owners who attempt to repair defective units. Technical consultation is available by calling (662) 323-5869.
5. This warranty does not apply to kits sold by or manufactured by MFJ Enterprises, Inc.
6. Wired and tested PC board products are covered by this warranty provided **only the wired and tested PC board product is returned**. Wired and tested PC boards installed in the owner's cabinet or connected to switches, jacks, or cables, etc. sent to MFJ Enterprises, Inc. will be returned at the owner's expense un-repaired.
7. Under no circumstances is MFJ Enterprises, Inc. liable for consequential damages to person or property by the use of any MFJ products.
8. **Out-of-Warranty Service:** MFJ Enterprises, Inc. will repair any out-of-warranty product provided the unit is shipped prepaid. All repaired units will be shipped COD to the owner. Repair charges will be added to the COD fee unless other arrangements are made.
9. This warranty is given in lieu of any other warranty expressed or implied.
10. MFJ Enterprises, Inc. reserves the right to make changes or improvements in design or manufacture without incurring any obligation to install such changes upon any of the products previously manufactured.
11. All MFJ products to be serviced in-warranty or out-of-warranty should be addressed to **MFJ Enterprises, Inc., 300 Industrial Park Rd, Starkville, Mississippi 39759, USA** and must be accompanied by a letter describing the problem in detail along with a copy of your dated proof-of-purchase and a telephone number.
12. This warranty gives you specific rights, and you may also have other rights, which vary from state to state.



MFJ ENTERPRISES, INC.

300 Industrial Park Road
Starkville, MS 39759

MFJ-249D Manual
Version 2
Printed In U.S.A.